

**FULL HD 1080p**

**VIDEO WALL CONTROLLER  
MULTIVIEWER SYSTEM**

**OIC-MP  
SERIES**



**OVERVIEW**

The OIC-MP Series is the latest addition to our wall controller systems. The OIC-MP Series is the perfect solution for when multiple sources must be shared in a collaborative environment for video capture for streaming, recording or presentation applications. The video capture card provides a high performance high density video capture solution for mission-critical applications that require high capture bandwidth. The video wall is ideal for a command center, traffic management, financial institutions, power and utilities, security and entertainment.

**FEATURES**

**VIDEO WALL CONTROLLER**

- » Core i7 Processor
- » Windows 7 / 64 bit
- » Rack Mount 4U Case with Front Lock
- » Expandable HD Inputs and Outputs
- » Multiple Video Wall Configurations

**VIDEO WALL CONTROLLER SOFTWARE**

- » Outputs Maximum 2560 x 1600 at 60Hz Resolution
- » Display Multiple Input Sources
- » Interactive Desktop Control and Configuration
- » Audio Playback for HDMI Source
- » Size and Position any Window
- » IP Camera Support
- » Stream a Source Over the Network
- » Displays Video Clip and Photos in Windows 7

<b>HD</b> Input / Output	<b>2560x1600</b> Max. Resolution	 Operating System
<b>4U RACK</b> Rack Mount Unit	<b>4/8/12/16</b> Input Channel	<b>500GB</b> Hard Drive Disk HDD Storage



# OIC-MP SERIES

## MULTIVIEWER SYSTEM

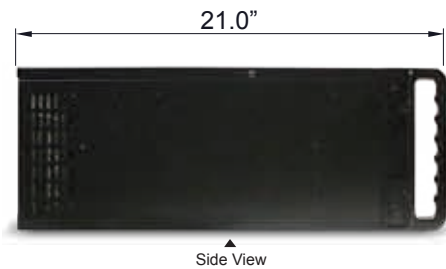
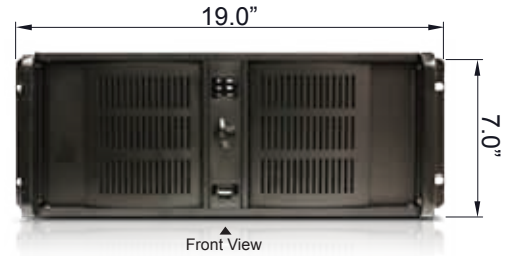
### SPECIFICATIONS

OIC-MP404, 804, 808		OIC-MP812, 1212, 1612, 1616	
<b>Hardware</b>			
Server Chassis	4U Black Chassis		
Power Supply	500W Redundant Power Supply		
Operating System	Window 7 Professional		
Processor	Intel Core i7		
System Bus	1333 MHz		
CD / DVD	18x DVD-RW ROM Drive		
Network Card	Integrated Intel PRO 10 / 100 / 1000	2 Gigabit Ethernet Ports	
Video Card	Onboard Video (VGA Output)		
Motherboard Chipset	Intel Chipset		
PCI Slots	6 PCIe Slots	9 PCIe Slots	
System RAM	8 GB DDR3	16 GB DDR3	
Operating System HDD	500 GB Hard Drive		
Input Card	4 Channel HD Capture Card (Up to 2)	4 Channel HD Capture Card (Up to 4)	
Input Card Source	DVI		
DMA Bandwidth MB/s Per Card	800 MB/s per capture processor, 3.2 GB/s total		
Frame Buffer MB	4 x 256		
Audio Supported	Audio supported only for HDMI Input		
Output Card	4 Channel Output Card (Up to 2)	4 Channel Output Card (Up to 4)	
Output Type	4 x Display Port 1.1a video ports providing up to 359M pixels/s at 24bit (eg 2560 x 1600 @ 60Hz)		
Power	115V, 12A Input		
Cooling	1 Processor Fan, 2 x 120mm Fans	2 x 120mm Fans	
Case Dimensions (W H D)	19.0" x 7.0" x 21.0"		
Accessories	Optical Mouse, DP to DVI adapters and Keyboard		
Weight	45 lbs	55 lbs	

\*Design and specifications are subject to change without notice

OIC-MP Series				
Part No.	Input CH / Output CH	Configuration		
		Main Unit	IN4DVI (4ch Capture Card) Qty	OUT4DP (4ch Output Card) Qty
OIC-MP404	4 / 4	1	1	1
OIC-MP804	8 / 4	1	2	1
OIC-MP808	8 / 8	1	2	2
OIC-MP812	8 / 12	1	2	3
OIC-MP1212	12 / 12	1	3	3
OIC-MP1612	16 / 12	1	4	3
OIC-MP1616	16 / 16	1	4	4

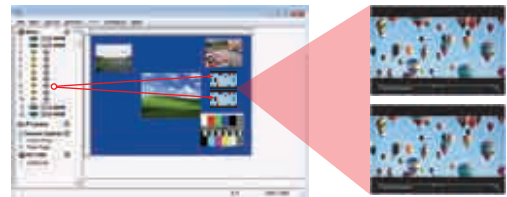
### PRODUCT DIMENSIONS



### CONTROLLER SOFTWARE

Video wall controller displays the desktop of the unit that is being controlled. It allows you to remotely display Vision, IP Camera and application Windows across a network on another unit or locally on the same unit.

- Duplicating input windows as you can



- Splitting in to sub-windows



- Back Ground Change



### BASIC CONNECTIONS (OIC-MP404)

